

iScan HD/HD+ Software Update instructions.

The iScan HD/HD+ software can be updated using a PC with a serial port. We recommend a serial port terminal program called Tera Term Pro (Version 2.3) that we provide on our website.

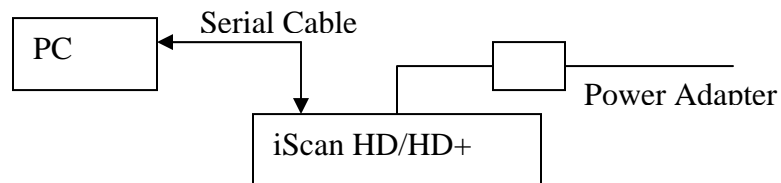
The update process is described below.

1) Hardware setup

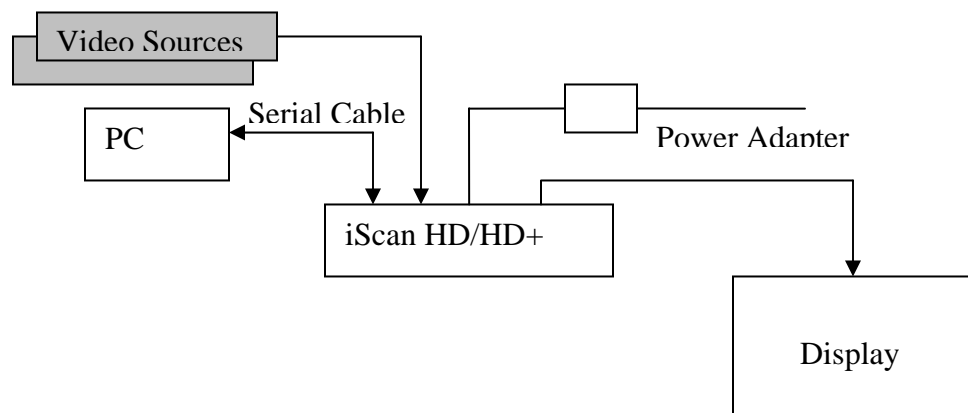
a) What's needed

- A) DB9 Male to Female extension (1:1) Serial Cable
- B) iScan HD/HD+ with Power Supply

b) Setup before installation



c) Setup after installation



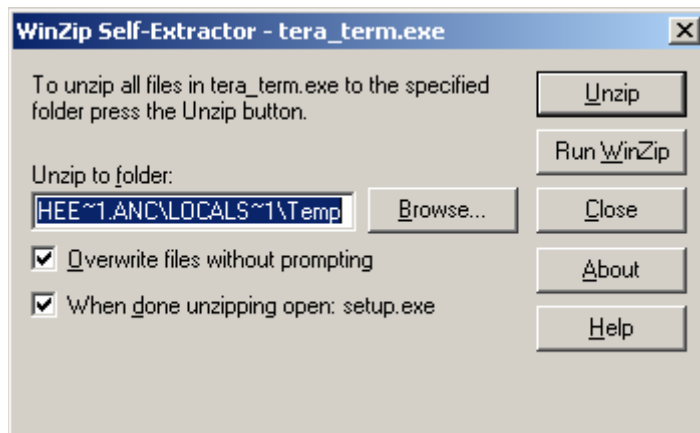
- d) Connect Serial Port cable between PC and iScan HD/HD+.
- e) Turn the PC and iScan HD/HD+ on.

2) Download needed software

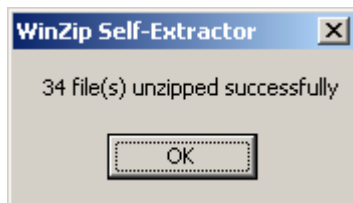
- a) Go to www.dvdo.com/update
- b) Download 'tera_term.exe' terminal program to your computer.
- c) Download the iScan HD/HD+'s latest software release. (.abt file)

3) Install Tera Term Pro on the PC

- a) Double click on 'tera_term.exe'.



- b) Click 'Unzip'.
- c) This action unzips to a temporary folder.



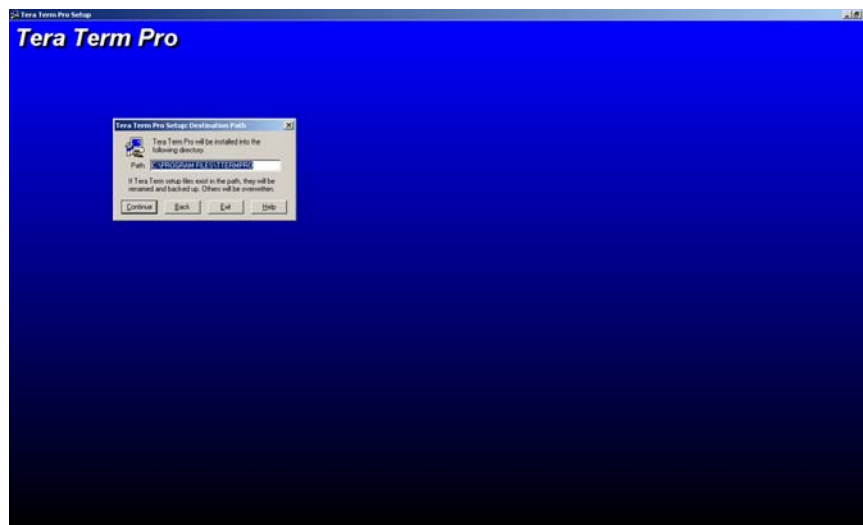
- d) Click 'OK'. This starts the Tera Term Pro setup program.



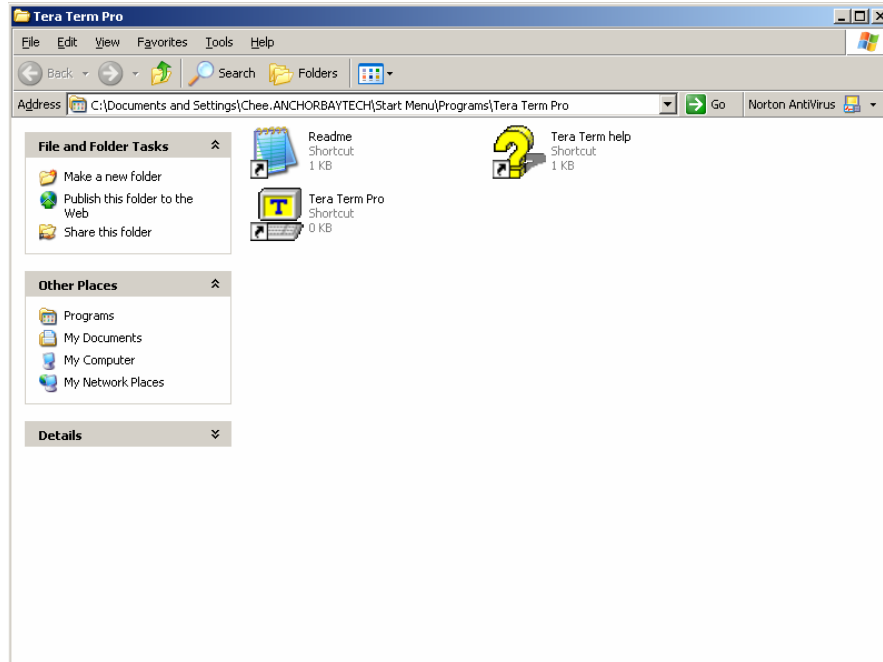
e) Select the preferred language and click 'Continue'.



f) Click 'Continue' unless an old version of Tera Term Pro is currently running.



- g) Click 'Continue' to install Tera Term Pro in the default Program directory.

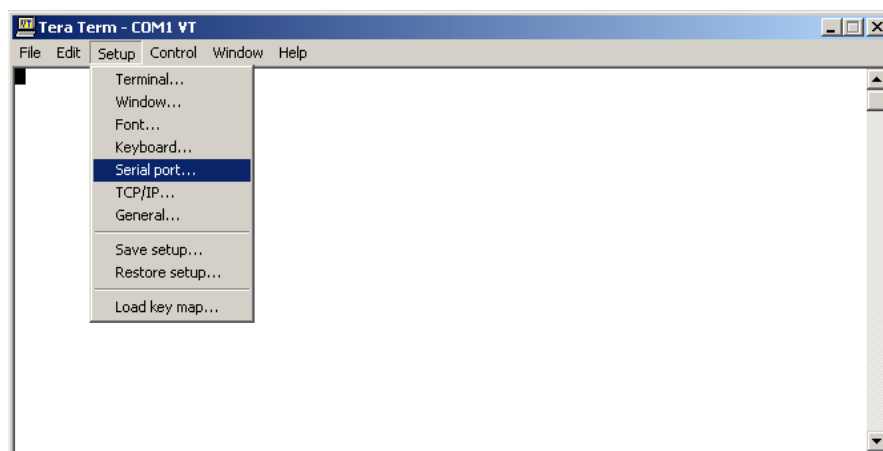


- h) Close this window and click 'OK' to exit the setup program.

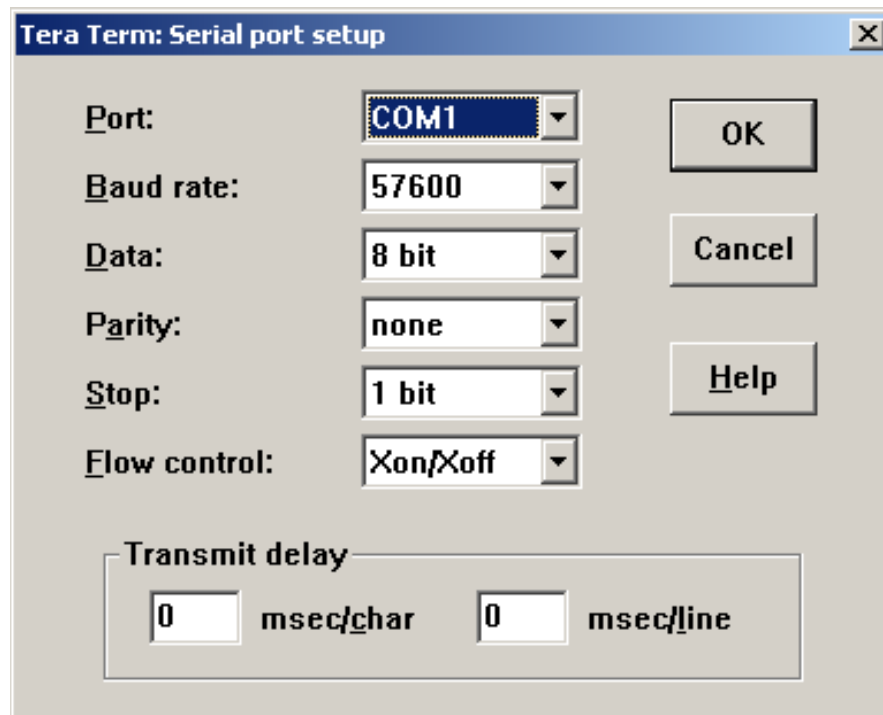
4) Setting up the PC

Make sure that no other program is using the serial port that is connected to the iScan HD/HD+.

- a) Run Tera Term Pro from the Program Menu.
b) Select 'Serial Port' from the Setup menu.



- c) Tera Term Pro has been configured to communicate directly with the iScan HD/HD+ through the serial port COM1. See below. Select another COM port if the serial cable is not connected to COM1.



- d) Click 'OK'. The serial port setup is completed.
e) Tera Term Pro is now ready to send the latest software file (.abt) to the iScan HD/HD+.

5) Setting up the iScan HD/HD+ for software update

- a) There are two ways to perform software update: using the Front Panel buttons or using the remote control and On-Screen Display (OSD).

A) Using the Front Panel buttons

- i) Press the 'Configuration' button repeatedly until the display shows "SWUP" (SoftWare Update)
- ii) Press the Up or Down arrow buttons until the display shows "YES".
- iii) Press the Enter/Exit button to confirm the software update.
- iv) The Front Panel will show 'LOAD'.

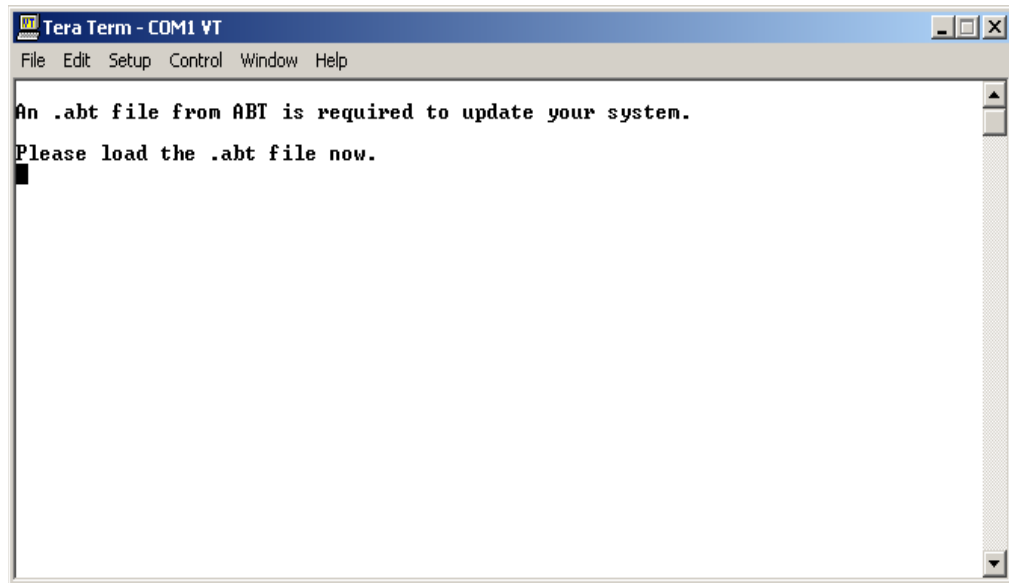
B) Using On-Screen Display and Remote Control

- i) Press the 'Menu' button on the remote control.
- ii) Select Configuration -> Software Update -> Yes.
- iii) Confirm by pressing the 'Enter' button.
- iv) The Front Panel will show 'LOAD'.

- b) If the iScan HD/HD+ has not been installed in your system, just use the Front Panel buttons as described above.

6) Completing the update process

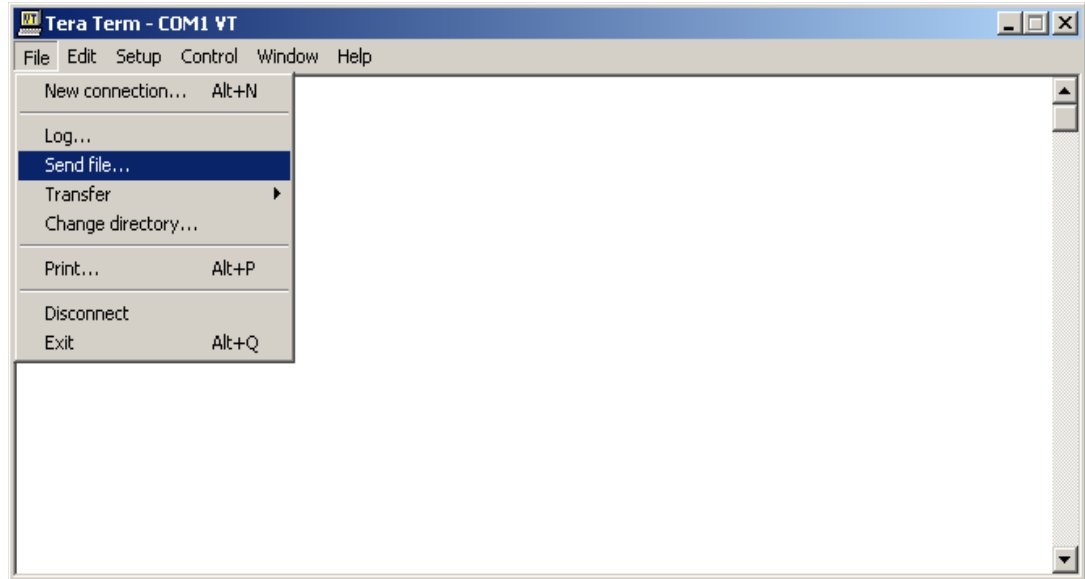
- a) On the Tera Term window, you will see the following message.



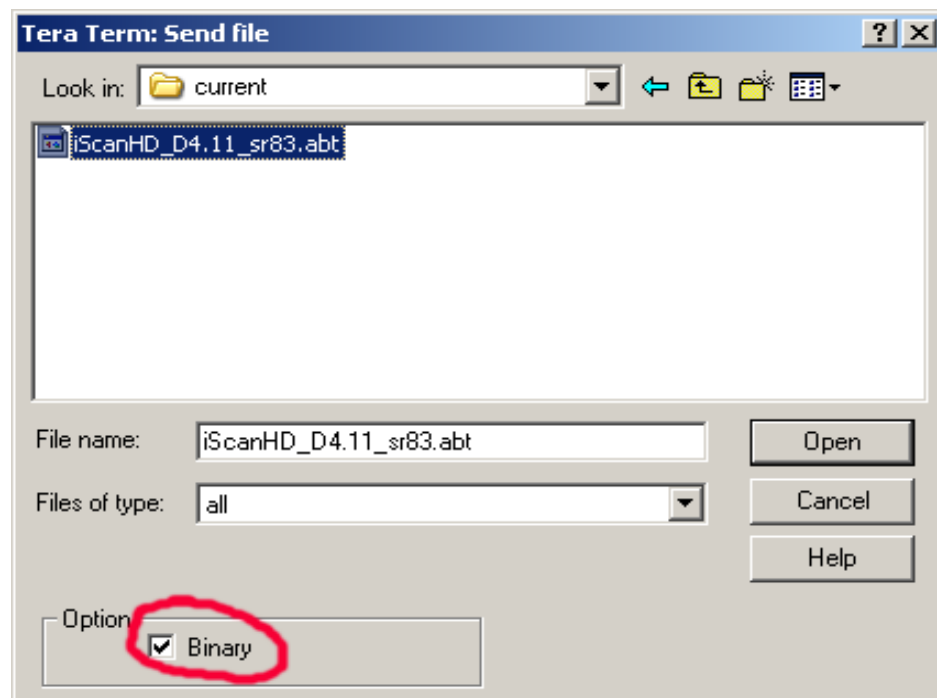
Important Note:

You can still cancel the download operation at this point. There are two ways to do this.

- A) Do nothing for about 5 minutes. After this time the iScan HD/HD+ will revert back to normal operations with the current software.
 - B) Unplug the power cord from the iScan HD/HD+ and then plug it back in again. The iScan HD/HD+ will revert back to normal operations with the current software.
- b) To update the system software select 'Send File' from the file menu.



c) Make sure Binary mode is selected.



d) Locate the '.abt' file to download . Only a file with a '.abt' extension should be selected. If any other file is loaded, an error will occur. If this happens see the troubleshooting section.

Note the file shown in the picture above is only an example, not the actual file.

Important: After this step it is not possible to go back to your current software version without reloading another '.abt' file.

- e) Click the 'Open' button to send the file.
- f) Data is now being transferred to your iScan HD/HD+. You should see the word "BUSY" scrolling on the Front Panel. You will also see the download status on the PC.
- g) When the update is complete you will see 'VRFY' momentarily displayed on the Front Panel. This is the iScan HD/HD+ checking its software to be sure it is correct.

The update process is complete the front panel light turns **green**.

- h) The download process may take up to 10 minutes to complete.

7) Trouble Shooting

- a) The front panel displays 'LOAD' even after cycling the system power by unplugging the iScan HD/HD+ power plug and plugging it in again.

If this problem occurs you must load a '.abt' file into your iScan HD/HD+. Download a .abt file from www.dvdo.com/update and load it according to the procedure above steps 4 through 6.

- b) The front panel displays an error code starting with "ERR". The error code description is given in the table below.

Error Code	Description
ERR1-2	File error. Make sure the correct file was chosen. Only a file with a .abt extension is valid for updating the iScan HD/HD+. Locate the correct file, reset the system by unplugging the power plug and plugging it in again. You can follow the software update procedure again to update the system with a valid .abt file. If after making a second attempt and the display still shows ERR2, the .abt file may be corrupted during download. Download the .abt file again.
ERR3	Device cannot be programmed. Either the file is corrupted or a hardware failure has occurred.
ERR4	Device 1 Programming Error. Either the file is corrupted or a hardware failure has occurred.
ERR5	Device 2 Programming Error. Either the file is corrupted or a hardware failure has occurred.
ERR6	Erase Timeout. Hardware Failure.

ERR7-8	The transmission of data to the iScan HD/HD+ has been interrupted. This could be caused by the terminal program being paused or canceled. Another cause of this error is that the serial port has become disconnected or has a faulty serial cable. If you have paused the terminal you can just restart it and the download will resume. Otherwise you must cycle the system power by unplugging the power cord, plugging it in again and repeat steps 5 and 6.
--------	--